



# CARTELLA COLORI

## UPHOLSTERY OPTIONS



categoria/category E

232



235



209



215



211



210



204



233



218



219



208



214



216



229



Tessuto / Fabric  
 Composizione:/composition:  
 05% PU 72% PVC 23% BACKING(85%PL 15%CO)  
 Test Martindale cicli 100.000 / cycles 100.000

categoria/category Z

265



154



285



164



163



177



234



210



Pelle / Leather  
 Composizione:  
 composition:  
 Pelle / Leather

categoria/category Z1 N.B. disponibile solo nei colori / available only in the colours: Z-210 / Z-163 / Z-177 / Z-164

Pelle ignifuga / Fireproof leather

(N.B. ignifugo se accoppiato a poliuretano ignifugo / fireproof if coupled with polyurethane foam flame retardant)

Differenze di tonalità rispetto alla categoria Z sono da ritenersi normali / Differences in tone than the Z category are to be considered normal



categoria/category **M**

19



11



30



40



3



6



21



35



9



31



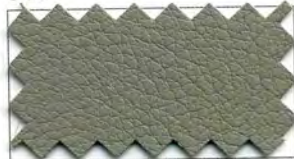
Tessuto / Fabric  
Composizione:/composition: 100%PL  
Test Martindale cicli 30.000 / cycles 30.000

categoria/category **C**

317



305



326



316



330



301



303



306



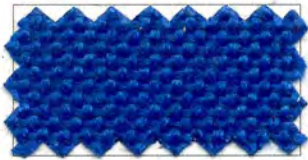
Tessuto ignifugo / Fireproof fabric  
(N.B. ignifugo se accoppiato a poliuretano ignifugo / fireproof if coupled with polyurethane foam flame retardant)

Composizione:/composition: 72%(93%PVC-7%PU) 28%CO

Test Martindale cicli 100.000 / cycles 100.000

categoria/category **B**

31



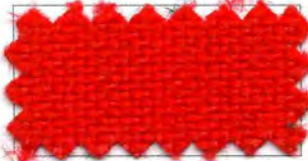
111



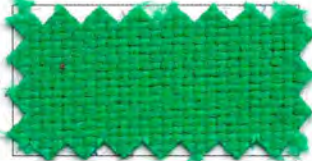
Composizione: / composition: 100% fibra acrilica/ 100% acrylic fiber  
Test Martindale cicli 27.000 / cycles 27.000

categoria/category **F**

34



13



47



92



10



**Tessuto ignifugo / Fireproof fabric**  
Omologazione classe I ministero dell'interno / homologated class I department of the interior  
Composizione:/composition: 100% polipropilene / 100% polypropylene  
Test Martindale cicli 35.000 / cycles 35.000

categoria/category **L**

502



503



508



505



507



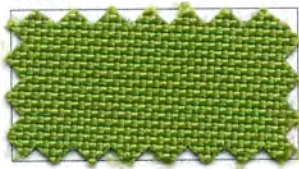
**Tessuto ignifugo / Fireproof fabric**  
Omologazione classe I ministero dell'interno / homologated class I department of the interior  
Composizione:/composition: 100% polipropilene / 100% polypropylene  
Test Martindale cicli 50.000 / cycles 50.000

categoria/category **Q**

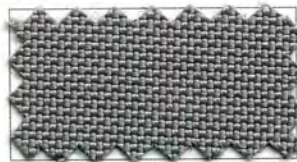
105



106



107



109



108



**Tessuto / Fabric**

Composizione:/composition: 100% poliestere alta tenacità / 100% high tenacity polyester

Test Martindale cicli 100.000 / cycles 100.000

categoria/category **S**

18



3



14



6



9



15



**Tessuto idrorepellente / Water-repellent fabric**

Composizione:/composition: 40%PU 50%PL 10% CO

Test Martindale cicli 35.000 / cycles 35.000

categoria/category **G**

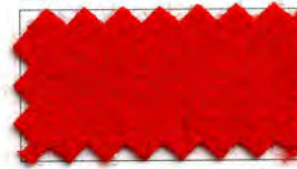
475



214



207



604



**Tessuto ignifugo / Fireproof fabric**

(N.B. ignifugo se accoppiato a poliuretano ignifugo / fireproof if coupled with polyurethane foam flame retardant)

Composizione:/composition: 70% LANA 25%PA 5% AF / 70% WOOL 25% PA 5% OF

Test Martindale cicli 100.000 / cycles 100.000

categoria/category **N**

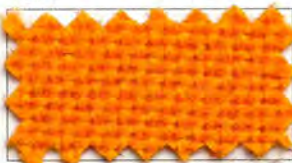
372



201



107



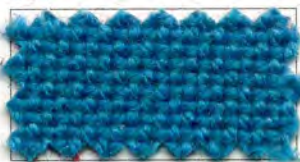
455



614



351



202



314



Tessuto ignifugo / Fireproof fabric

Omologazione classe I ministero dell'interno / homologated class I department of the interior

Composizione:/composition: 100% poliestere-trevira CS / 100% polyester-trevira CS

Test Martindale cicli 100.000 / cycles 100.000

categoria/category **H**

Scocca in Skay  
Monocoque in Skay

Cuscini in pelle Categoria Z  
Cushions in leather Category Z

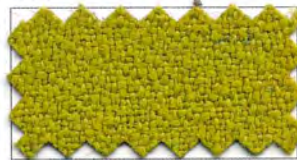
H	100	130	140	150	160	170	180	190
Skay	Nero Black	Marrone Brown	Giallo Yellow	Bordeaux	Blu Blue	Rosso Red	Beige	Bianco White
Z	210	265	154	285	164	163	177	234

categoria/category **V**

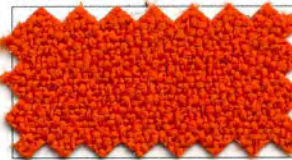
807



814



810



811



812



813



Tessuto ignifugo / Fireproof fabric

Omologazione classe I ministero dell'interno / homologated class I department of the interior

Composizione:/composition: 100% poliestere-trevira CS / 100% polyester-trevira CS

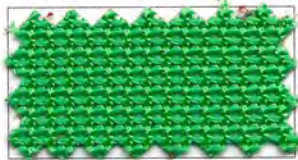
Test Martindale cicli 100.000 / cycles 100.000

## categoria/category K

751



753



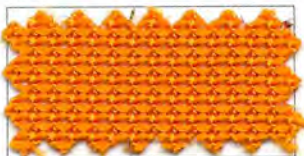
754



750



752

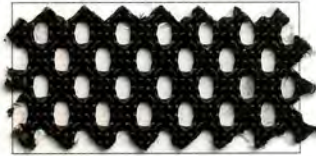


## categoria/category KI

RETE IGNIFUGA  
FIREPROOF MESH



756



Rete / Mesh

Composizione:/composition: 100% poliestere / 100% polyester  
Test Martindale cicli 100.000 / cycles 100.000

## categoria/category P

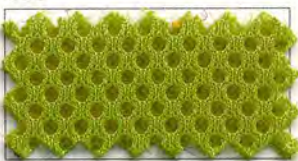
654



650



653



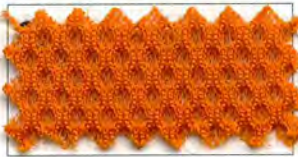
652



651



655



Tessuto ignifugo / Fireproof fabric

(N.B. ignifugo se accoppiato a poliuretano ignifugo  
fireproof if coupled with polyurethane foam flame retardant)

Composizione:/composition: 100% poliestere / 100% polyester  
Test Martindale cicli 100.000 / cycles 100.000

## Manutenzione / maintenance:

### categoria/category E / K / Z / C

Acqua e comune detersivo neutro. / Water and common neutral cleaner.

### categoria/category B / F / L / Q / V / G / N / P / M / S

Spolverare con aspirapolvere. Togliere subito le macchie con una spugna. In caso di macchia vecchia, usare un comune smacchiatore tamponando delicatamente, trattando la macchia dall'esterno verso l'interno.

Dust with vacuum cleaner. Remove immediately the stains with a sponge. In case of old stains, use a common stain-remover, gently buffering and treating the stains from outside to inside.



Compir S.r.l.

Contrada Mannanici  
95048 Scordia (CT) Italy

Tel.: +39 095 7937011  
Fax: +39 095 658264

[www.compir.it](http://www.compir.it)  
[compir@compir.it](mailto:compir@compir.it)