

DV910 Oxford

Finiture cromatiche / Colour finishes

Tavoli/ Tables

Piani di lavoro sp. 3,8 cm, in melaminico con bordi in ABS sp. 0,2 cm
/Worktops 3.8 cm thick, in melamine with ABS edge-profiles 0.2 cm thick

WN



Bianco opaco/
Matt white

NM



Noce "Maroncelli"/
"Maroncelli" walnut

RC



Rovere chiaro/
Light oak

RM



Rovere Moro/
Dark oak

Piano di lavoro effetto pelle sp. 3,8 cm
/Leather effect worktop 3.8 cm thick

AR



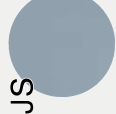
Arena/
Sand

CF



Caffé/
Coffee

JS



Jasmine/
Jasmine

NR



Nero/
Black

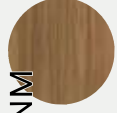
Piano frontale dei piani composti sp. 3,8 cm
/Melamine panelled legs and frame 3.8 cm thick

WN



Bianco opaco/
Matt white

NM



Noce "Maroncelli"/
"Maroncelli" walnut

RC



Rovere chiaro/
Light oak

RM



Rovere Moro/
Dark oak

Note

- Prodotti non in pronta consegna. Per la disponibilità contattare l'ufficio commerciale/Items not in prompt delivery. Please contact the commercial department to check availability.
- Fino ad esaurimento/Until exhaustion.